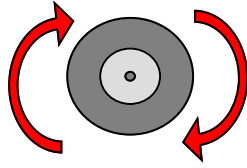


The Wheels on the Bus

Verse 1:

The wheels on the bus
Go round and round
Round and round
Round and round.
The wheels on the bus
Go round and round
All around the town.



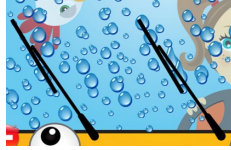
Verse 5:

The babies on the bus
Go "Boo-hoo-hoo!
Boo-hoo-hoo!
Boo-hoo-hoo!"
The babies on the bus
Go "Boo-hoo-hoo!"
All around the town.



Verse 2:

The wipers on the bus
Go swish, swish, swish
Swish, swish, swish
Swish, swish, swish.
The wipers on the bus
Go swish, swish, swish
All around the town.



Verse 6:

The driver of the bus
Says "Please sit down!
Please sit down!
Please sit down!"
The driver of the bus
Says "Please sit down!
All around the town.



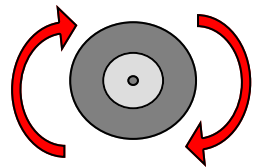
Verse 3:

The horn on the bus
Goes beep, beep, beep
Beep, beep, beep
Beep, beep, beep.
The horn on the bus
Goes beep, beep, beep
All around the town.



Verse 7:

The wheels on the bus
Go round and round
Round and round
Round and round.
The wheels on the bus
Go round and round
All around the town.

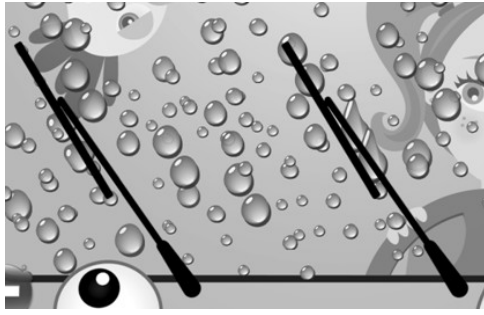
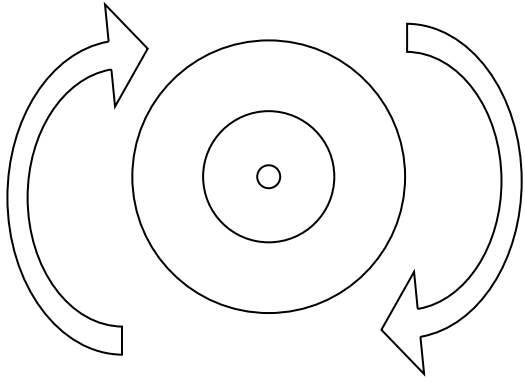


Verse 4:

The doors on the bus
Go open and shut
Open and shut
Open and shut.
The doors on the bus
Go open and shut
All around the town.



The Wheels on the Bus



1. The wheels on the bus
Go round and round
Round and round
Round and round.
The wheels on the bus
Go round and round
All around the town.

2. The wipers on the bus
Go swish, swish, swish
Swish, swish, swish
Swish, swish, swish.
The wipers on the bus
Go swish, swish, swish
All around the town.

3. The horn on the bus
Goes beep, beep, beep
Beep, beep, beep
Beep, beep, beep.
The horn on the bus
Goes beep, beep, beep
All around the town.



4. The doors on the bus
Go open and shut
Open and shut
Open and shut.
The doors on the bus
Go open and shut
All around the town.

5. The babies on the bus
Go "Boo-hoo-hoo!
Boo-hoo-hoo!
Boo-hoo-hoo!"
The babies on the bus
Go "Boo-hoo-hoo!"
All around the town.

6. The driver of the bus
Says "Please sit down!
Please sit down!
Please sit down!"
The driver of the bus
Says "Please sit down!"
All around the town.